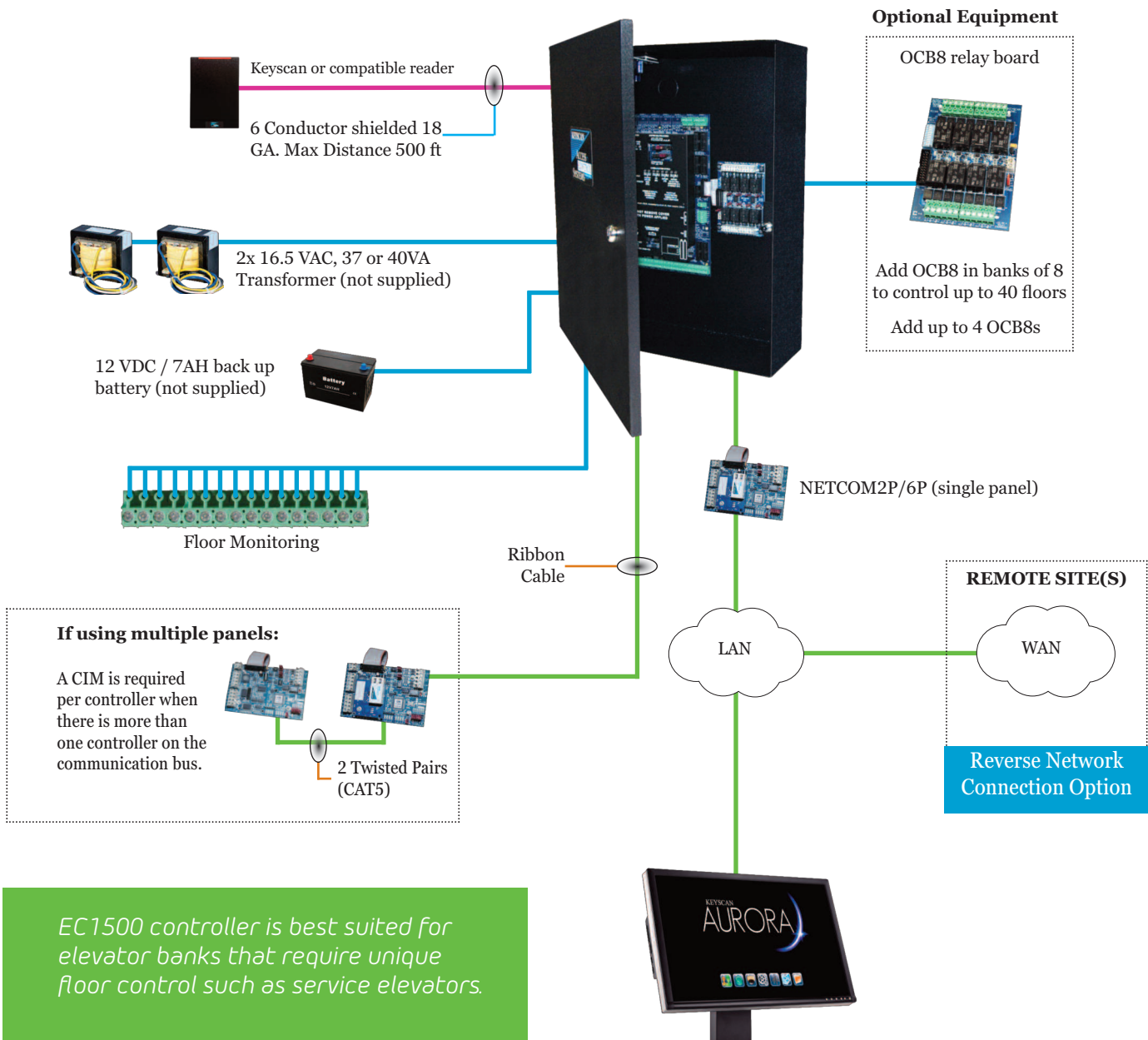


Keyscan EC1500

1-Reader Elevator Floor Access Control Unit



Keyscan or compatible reader
6 Conductor shielded 18 GA. Max Distance 500 ft

2x 16.5 VAC, 37 or 40VA Transformer (not supplied)

12 VDC / 7AH back up battery (not supplied)







Floor Monitoring

Ribbon Cable

If using multiple panels:

A CIM is required per controller when there is more than one controller on the communication bus.

2 Twisted Pairs (CAT5)

	CA150	CA250	CA4500	CA8500	EC1500	EC2500
Keyscan Access Control Unit						
Doors/Elevator Floors Supported	1 door	2 doors	4 doors	8 doors	1 cab (40 flrs)	2 cabs (16 flrs)
Reader Ports	2 (in/out)	2	4	8	1	2
Multi ACU Compatibility	Yes (Ethernet)	Yes	Yes	Yes	Yes	Yes
System Status LEDs	Yes	Yes	Yes	Yes	Yes	Yes
Dual Processors	Yes	Yes	Yes	Yes	Yes	Yes
Flash Memory	Yes	Yes	Yes	Yes	Yes	Yes
Power Fail Output	NA	Yes	Yes	Yes	Yes	Yes
Floor Monitor Inputs (supervised)	NA	NA	NA	NA	Yes	Yes
Inputs						
Request to Exit (RTE) Inputs (supervised)	1	2	4	8	NA	NA
Door Contact Inputs	1	2	4	8	NA	NA
Auxiliary Inputs (supervised)	2	8	16	16	NA	NA
I/O Input Expansion	NA	NA	64	64	NA	NA
Outputs						
Auxiliary Output Relays	1	2	4	8	NA	NA
Expansion Auxiliary Output Relays	NA	NA	8	8	NA	NA
I/O Outputs	NA	NA	64	64	NA	NA
Door Output Relays	1	2	4	8	NA	NA
Capacity						
No. of Credential-holders	45,000 (90,000*)	45,000 (90,000*)	45,000 (90,000*)	45,000 (90,000*)	45,000 (90,000*)	45,000 (90,000*)
Transaction File Buffer	6000	6000	6000	6000	6000	6000
Time Zones	256	256	256	256	256	256
Time Schedules	512	512	512	512	512	512
Group Levels	511	511	511	511	511	511
Holiday Dates	64	64	64	64	64	64
Connectivity						
Ethernet Ready	Equipped	Optional	Optional	Optional	Optional	Optional
PoE - Power over Ethernet [†] (IEEE 802.3af)	Equipped	NA	NA	NA	NA	NA
Global Integration	Network/Server Dependant	Capable (CIM Required)	Capable (CIM Required)	Capable (CIM Required)	Capable (CIM Required)	Capable (CIM Required)
CMAC Reverse IP	Equipped	Optional	Optional	Optional	Optional	Optional
Serial Communication	Yes	Yes	Yes	Yes	Yes	Yes

Electronic Access & Data (EAD)
 Keyscan Inc.
 901 Burns St., E., Whitby, Ontario
 Canada L1N 0E6

1 888 539-7226 | www.keyscaan.ca

KKT2013 2016-05